



## Sunjoy® Mini Salsa Japanese Barberry

*Berberis thunbergii 'Mimi'*

Height: 24 inches

Spread: 24 inches

Sunlight:

Hardiness Zone: 4

### Description:

This compact dwarf is a well-shaped mound of coral-red newer foliage that matures to deep red; grown primarily for foliage; very showy, great as a color contrast in the landscape; plant on slopes, in beds, or as a border

### Ornamental Features

Sunjoy Mini Salsa Japanese Barberry has attractive dark red deciduous foliage which emerges coral-pink in spring on a plant with a round habit of growth. The small oval leaves are highly ornamental and turn an outstanding burgundy in the fall.

### Landscape Attributes

Sunjoy Mini Salsa Japanese Barberry is a dense multi-stemmed deciduous shrub with a more or less rounded form. Its relatively fine texture sets it apart from other landscape plants with less refined foliage.

This shrub will require occasional maintenance and upkeep, and should not require much pruning, except when necessary, such as to remove dieback. Deer don't particularly care for this plant and will usually leave it alone in favor of tastier treats. Gardeners should be aware of the following characteristic(s) that may warrant special consideration;

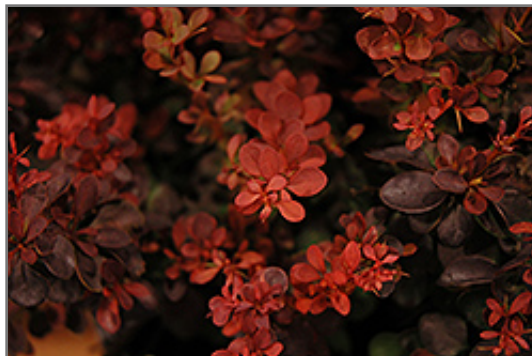
- Spiny

Sunjoy Mini Salsa Japanese Barberry is recommended for the following landscape applications;

- Mass Planting
- Border Edging
- General Garden Use

### Planting & Growing

Sunjoy Mini Salsa Japanese Barberry will grow to be about 24 inches tall at maturity, with a spread of 24 inches. It tends to fill out right to the ground and therefore doesn't necessarily require facer plants in front. It grows at a slow rate, and under ideal conditions can be expected to live for approximately 20 years.



*Sunjoy Mini Salsa Japanese Barberry foliage*  
Photo courtesy of NetPS Plant Finder



2550 E. Dempster St.  
Des Plaines, IL  
847-824-7411

1819 N. Wilke Road  
Arlington Heights, IL  
847-255-5800

496 Old Skokie Hwy.  
Park City, IL  
847-249-7670

30560 N. Russell Rd.  
Volo, IL  
815-363-4420

[www.lurvey.com](http://www.lurvey.com)

---

This shrub does best in full sun to partial shade. It is very adaptable to both dry and moist growing conditions, but will not tolerate any standing water. It is not particular as to soil type or pH, and is able to handle environmental salt. It is highly tolerant of urban pollution and will even thrive in inner city environments. This is a selected variety of a species not originally from North America.